



Government of Karnataka



February 3-5, 2016  
Bangalore Palace, Bengaluru

# BAGALKOTE

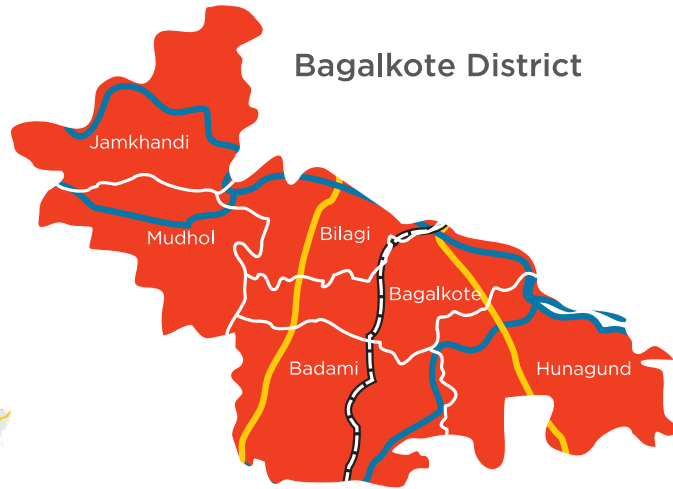
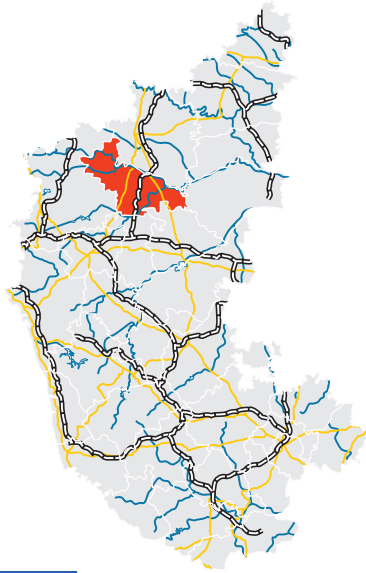
District Profile

# Snapshot

**BAGALKOTE**  
District Profile

- District Overview
- Connectivity
- Civic Infrastructure
- Tourism
- Power and Water
- Economic Profile
- Agricultural Profile
- Industry Profile
- Key Industries
- Annexure

# District Overview



## Bagalkote District

LEGEND	
	National Roads
	Rivers
	Railway

- Bagalkote is located in the northern part of Karnataka and was carved out of Bijapur District in 1997
- Spread across 6 Talukas: Badami, Bilagi, Bagalkote, Hunagund, Jamakhandi and Mudhol.

Temperature	38° C (Max) 18° C (Min)	District Headquarter	Bagalkote town
Relative Humidity (%)	88 (Max) 46 (Min)	Population	18,89,752 (As per Census 2011)
Annual Normal Rainfall	584 mm	Population Density	288 per sq. km
Rivers	Krishna, Malaprabha, Ghataprabha	Sex Ratio	989 females per 1000 males
Area	6,552 sq. km	Literacy Rate	75.77 %

Source: Karnataka at Glance, 2013-14

# Economic Profile

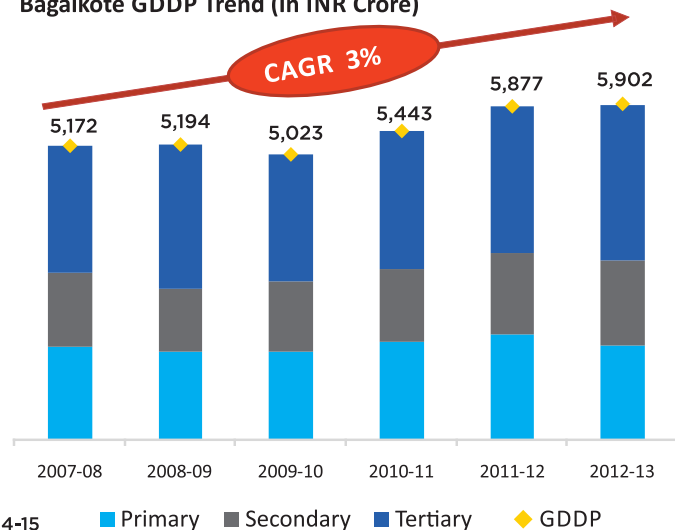


- 1 GDDP is INR 5,902 Crore for the district in the year 2012-13
- 2 Per capita annual income in the district is INR 50,765 for the year 2012-13
- 3 Construction and Manufacturing contributed 44% and 43% respectively to the secondary sector



Bagalakote District's Contribution to GSDP of Karnataka (2012-13)		
Description	INR Crore	Contribution (%)
Total District GDP	5,902	1.9
Agriculture and Allied (Agriculture, Animal Husbandry, Forestry, Fishing)	1,630	3.8
Industry (Manufacturing, Construction, Mining)	1,525	1.8
Services (Real estate, Hotels and restaurants, banking, and legal services)	2,746	1.6

Bagalkote GDDP Trend (In INR Crore)



Source: State and District Domestic Product of Karnataka 14-15

■ Primary ■ Secondary ■ Tertiary ◆ GDDP



# Agricultural Profile

## Thrust Areas

- Storage facilities and Food Processing Units
- Raisin exports
- Flour Mills and Oil Extraction
- Scope in building of cold storage facilities

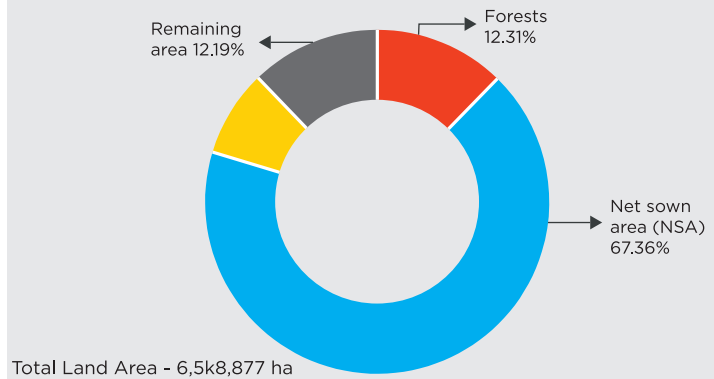
## Major Crops

- Wheat, jowar, bajra and maize are major cereals grown in the district
- Groundnut, sunflower are major Oilseeds
- Sugarcane and Cotton are major commercial crops grown in Bagalkote
- Area under cultivation- 4.67 lakh hectares
- Irrigated area-59%

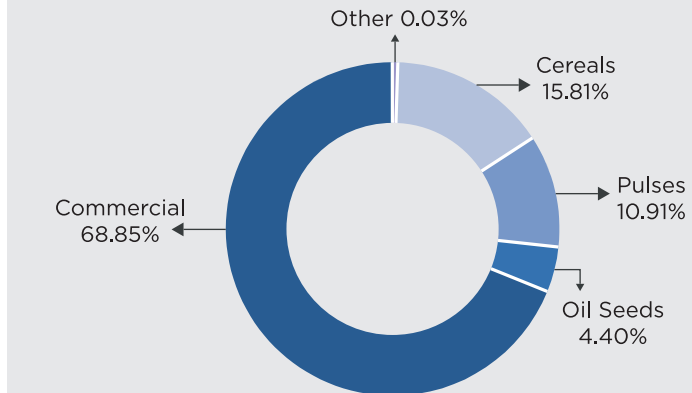
## Key Enablers

- Bi-modal rainfall pattern
- Varied agro climatic conditions
- Good infrastructure for agriculture marketing

## Land Utilisation (%)



## Cropping Pattern (in %)



**100 acre Food Park established (Operational) in Navanagara**

Source: Karnataka at Glance, DIC - Bagalkote



# Industry Profile

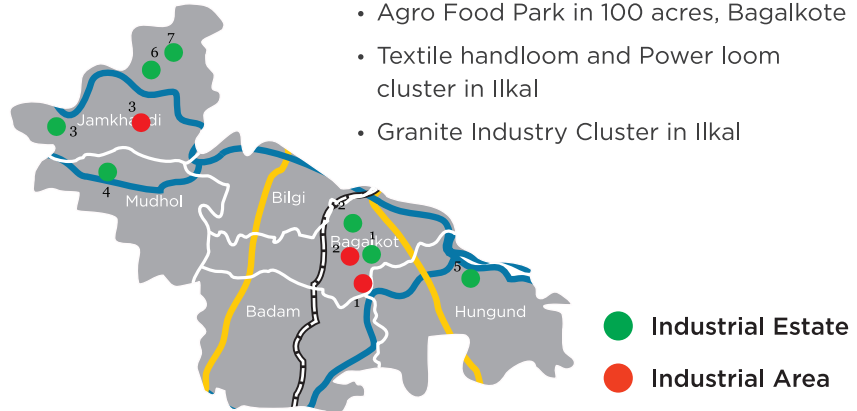
- 19 Large and Medium scale Industries
- Aggregated investment INR 5,842 Crore
- 4269 MSME with an aggregated investment of INR 244 Crore

## Natural Resources

- Lime stone
- Pink granite
- Copper
- Iron ore
- Dolomite

## Industrial Areas / Estates

- Agro Food Park in 100 acres, Bagalkote
- Textile handloom and Power loom cluster in Ilkal
- Granite Industry Cluster in Ilkal



Sl. No.	Industrial Area	Extent (acres)	No. of plots/units	Vacant area/plots
1	Agro Tech Park, Navanagar (under PPP)	100	Vacant	Vacant
2	Bagalkote	157	113	-
3	Asangi - Jamkhandi Tq.	114	23	-

Sl. No.	Industrial Estates	Extent (acres)	No. of plots/units	Vacant area/plots
1	Bagalkote	14	92	-
2	Navnagar, Bagalkote	10	55	55
3	Jamkhandi	19	71	1
4	Mudhol	11	44	1
5	Hunagund	20	52	6
6	Banahatti	9	4	-
7	Khagawad	20	1	-

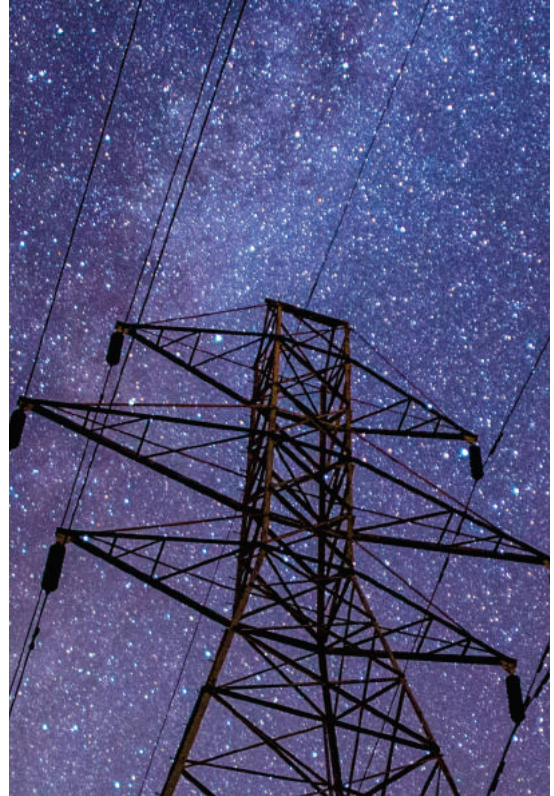
Source: DIC - Bagalkote



# Power and Water

## Power

- Transmission and distribution in the district is being done by Hubli Electricity Supply Company Limited (HESCOM)
- Major hydel power project is present at Alamatti Dam reservoir across Krishna river
- Almatti reservoir has 6 power generation units with a combined capacity of 290 MW
- The units utilize irrigation releases and a part of flood release to generate power
- Average demand in the district-
  - Industry-873.124 MU
  - Domestic-160.74MU
- Average annual consumption
  - Industry-727.602 MU
  - Domestic- 133.95 MU



## Water

- Three rivers -Krishna, Ghataprabha & Malaprabha and 2 barrages -Hipparagi and Hirepadasalagi serves the irrigation requirements of the district
- 59% of the cultivable land in the district is irrigated
- Net Irrigated Area 2.73 Lakh Ha
- Average demand in the district- 122.59 MLD
- Average consumption - 101.4 MLD

Sl. No.	Irrigational Facilities	No.
1	Canals	189 Km
2	Tanks	44
3	Wells	11,636
4	Tube Wells	29,530
5	Lift Irrigation	19



Source: DIC - Bagalkote

# Tourism



**Badami:** Famous for rock-cut and other structural temples.

**Pattadakal:** On the banks of the Malaprabha River; it was built during 8th Century AD. It was designated as a UNESCO World Heritage Site in 1987.

**Aihole:** Built in the 12th Century, Famous for its Kadamba style of architecture, rich antiquity. The sculptures are breathtakingly beautiful

**Durga Temple** at Aihole

**Mahakuta Group of Temples:** An important place of worship for Hindus and the location of a well-known Shaiva monastery.

**Banashankari Amma Temple:** A Hindu shrine located at Cholachagudd near Badami. The temple is popularly called Banashankari or Vanashankari

**Mudhol:** The birth place of Poet Kavi Chakravarti Ranna. There's an old underground Shiva Temple, Nelagudi locally.

**Kudalasangama:** Beautiful memorial of Sri Basaveshwara, social reformer who left his physical body in this place.

Laboratory for architecture

Renowned for Historical destinations

**Badami -**

Internationally Famous for Caves carved in monolithic single stone

Home of ancient Temples "The City of Ancient Temples"

**Opportunities Identified-** Development of Theme Parks, Hotels/ Resorts, Wayside Amenities





# Social Infrastructure



Educational Institution	No.
PU Colleges	107
General Degree Colleges	27
Medical Colleges (Indian System Of Medicine)	6
Medical Colleges	1
Dental Colleges	1
Polytechnic Colleges	11
Engineering Colleges	2

Healthcare Facilities	No.
Indian System of Medicine hospitals	6
Primary Health Centres	48
Community Health Centres	8
Allopathy Hospitals	63
Private Nursing Homes and Clinics	811

## Other Key Institutions

- University of Horticulture Sciences
- BVBS - S Nijalingappa Medical College and HSK Hospital & Research Centre at Bagalkote
- BVVS - Ayurvedic Medical College, Bagalkote
- BVVS - Master of Computer Science
- BVVS - Institute of Management Studies
- BVVS - Nursing School and Colleges
- BVVS - Science and Technology Park
- Beluru Gurubasava Mahaswamiji Institute of Technology Mudhol
- B.V.V.S Polytechnic
- B.V.V.S.P.M. Nadagouda Memorial Dental College & Hospital

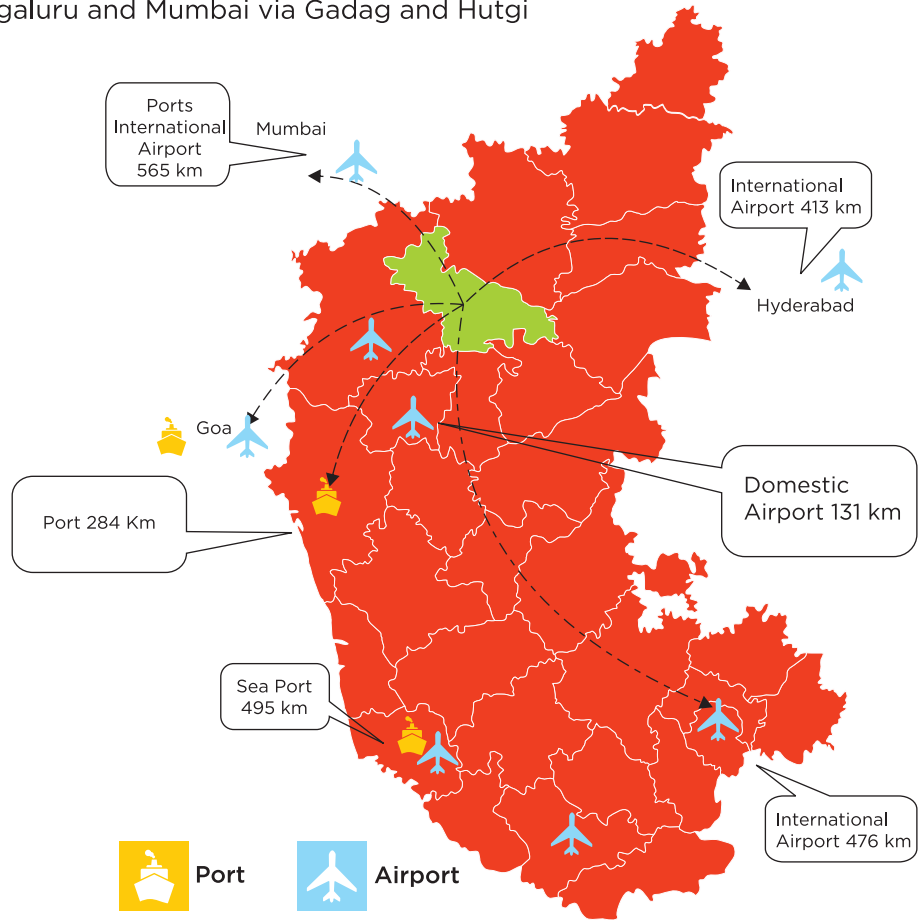


Source: DIC - Bagalkote, [www.targetstudy.com](http://www.targetstudy.com)

# Connectivity



- NH - 13 (Runs from Solapur, Maharashtra to Mangaluru, Karnataka) & NH - 218 (Connects 5 main cities of Karnataka-Bidar, Kalaburagi, Bagalkote, Bijapur and Hubli) goes through district
- Broad gauge railway line passes through Bagalkote and Badami town connecting Bengaluru and Mumbai via Gadag and Hutgi (MH) junctions



Nearest Airport		Nearest Seaport	
Hubballi	131 km.	Karwar	284 km.
Belgavi	141 km.	Goa	413 km.
Goa	245 km.	Mangaluru	476 km.
Hyderabad	413 km.	Mumbai	565 km.
Bengaluru	476 km.		



# Potential Industries

## **Cement industries:**

- Availability of raw materials, natural resources and infrastructure support

## **Textile and handloom industries:**

- Availability of cotton and skilled labour (silk weavers) enabling setting up of MSME units

## **Sugar and food processing:**

- There are 9 sugar factories in the district
- Presence of flour mills and oil extraction
- 12% of MSME units engaged in Agri and Food Processing sector

## **Other industries:**

- Nearly 9% of the total units under General Engineering category
- Building materials ->20% of MSME units
- Granite Industry



# Investment Opportunities



Project Name	Sector	Estimated Cost (INR Crore)	Estimated Cost (USD Million)	Agency	Status
Development of road from Bagalkote to Gadag (one package of KSHIP)	Transportation	Part of 7000	Part of 1166.7	KSHIP	DPR under preparation
Development of Airstrips in Bagalkote district	Transportation	NA	NA	KSIIDC	Conceptual -ization
Development of Agri-logistics hub	Agri Infrastructure	680	131	KAPPEC	DPR under preparation

## Additional Projects

NTPC Thermal Power Plant at Kudagi, Bagewadi Taluk

# Annexure

## Large Scale Enterprises/Public Sector undertakings in Bagalkote District

1. Prabhulingeshwar Sugar Ltd. ,Siddapur, Tq. Jamkhandi
2. Raitar Sahakari Sakkare Karkane Niyamit Hebbal ,Tq: Mudhol
3. Godavari Sugars Ltd., Tq: Mudhol
4. Nirani Sugars Ltd., Tq: Mudhol
5. Gem Sugar Ltd. ,Tq: Bilgi
6. Somaiya Organo Chemicals Ltd., Tq: Mudhol9
7. Bagalkote Cements Industries Ltd., Bagalkote
8. Banahatti Co-operative Spinning Mills Ltd., Tq: Jamkhandi.
9. Jamkhandi Sugar Ltd.,Tq: Jamkhandi.
10. Katawa Udyog Ltd., Tq: Mudhol
11. Sadashiva Sugars Pvt. Ltd., Tq: Bagalkote
12. Nirani Cements Pvt. Ltd., Tq: Mudhol
13. Bilgi Sugar Pvt. Ltd., Tq: Bilgi
14. Indian Cane Power Ltd., Tq: Mudhol
15. Kedarnath Sugar Ltd., Tq: Badami
16. J.K. Cements Pvt. Ltd., Tq: Mudhol
17. Kartik Glucon Pvt. Ltd., Tq: Badami.

## Key Players



**BAGALKOT CEMENT & INDUSTRIES LTD.**

**Nirani Group Of Companies Ltd**



**JK Cement  
Works**





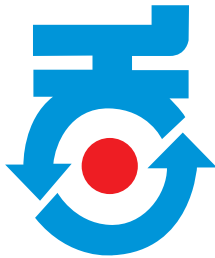
# Contact



Commissioner for Industrial Development & Director  
of Industries and Commerce  
Government of Karnataka  
No. 49, South Block, Khanija Bhavan,  
Race Course Road, Bengaluru - 560 001, India  
Ph.: +91 80 2238 6796  
Email: [commissioner@karnatakaindustry.gov.in](mailto:commissioner@karnatakaindustry.gov.in)  
visit us at: [www.karnatakaindustry.gov.in](http://www.karnatakaindustry.gov.in)



Joint Director  
District Industries Centre (DIC)  
Room No.135, Administrative Building,  
Navanagar, Bagalakote - 587101.  
Ph: (+91-8354) 235294, 235245  
Email: [jd-bagalakote@karnatakaindustry.gov.in](mailto:jd-bagalakote@karnatakaindustry.gov.in)



Managing Director  
Karnataka Udyog Mitra  
3rd Floor, Khanija Bhavan (East Wing),  
No. 49, Race Course Road, Bengaluru - 560 001, India  
Ph.: +91 80 2228 2392, 2228 5659, 2238 1232, 2228 6632  
Fax: +91 80 2226 6063  
Email: [md@kumbangalore.com](mailto:md@kumbangalore.com)  
Visit us at: [www.investkarnataka.gov.in](http://www.investkarnataka.gov.in)

